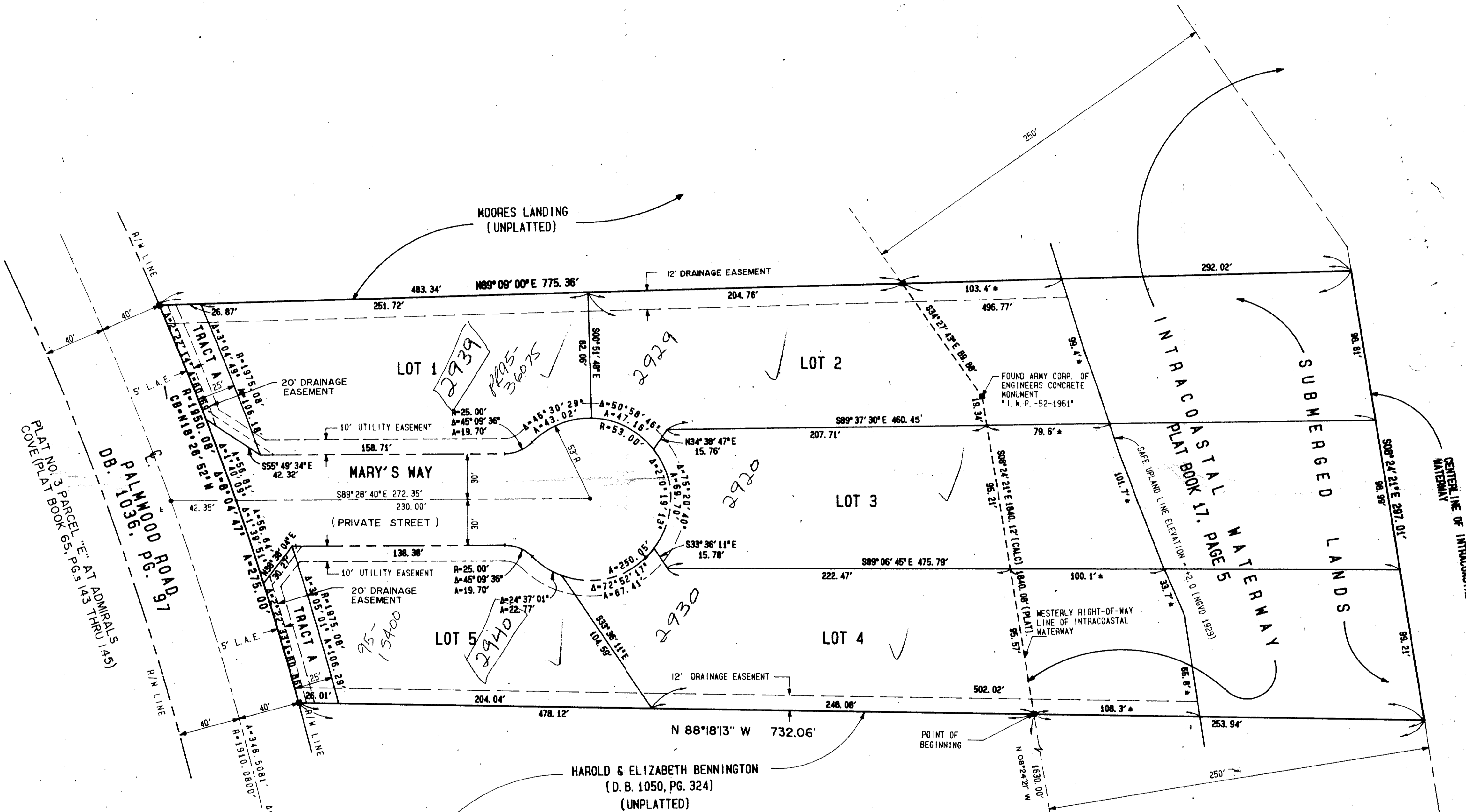
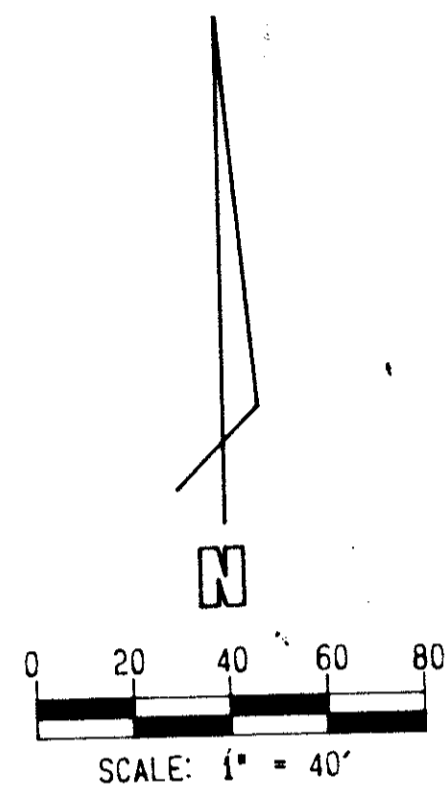


**Kimley-Horn**  
CIVIL ENGINEERS & SURVEYORS  
4431 EMBARCADERO DRIVE, WEST PALM BEACH, FL 33407  
11 EAST OSCEOLA STREET, STUART, FLORIDA 34994

# COMMODORE'S POCKET

A PLANNED RESIDENTIAL DEVELOPMENT (P.R.D.)  
LYING IN SECTION 17, TOWNSHIP 41 SOUTH, RANGE 43 EAST  
PALM BEACH COUNTY, FLORIDA



LEGEND

- - INDICATES SET PRM (PERMANENT REFERENCE MONUMENT) R.L.S. #4190 UNLESS OTHERWISE NOTED
- - PCP (PERMANENT CONTROL POINT) TO BE SET
- D.B. - DEED BOOK
- PG. - PAGE
- R - RADIUS ANGLE
- Δ - DELTA ANGLE
- A - ARC LENGTH
- CB - CHORD BEARING
- (NGVD 1929) - NATIONAL GEODETIC VERTICAL DATUM OF 1929
- R/W - RIGHT OF WAY
- L.A.E. - LIMITED ACCESS EASEMENT

NOTICE: THERE MAY BE ADDITIONAL RESTRICTIONS THAT ARE NOT RECORDED ON THIS PLAT THAT MAY BE FOUND IN THE PUBLIC RECORDS OF THIS COUNTY.



SOUTHEAST CORNER OF SECTION 17, TOWNSHIP 41 SOUTH, RANGE 43 EAST, FOUND CONCRETE MONUMENT (DISTURBED)

SURVEYORS NOTES:

1. Easements:
  - a. No buildings or any kind of construction shall be placed in utility or drainage easements.
  - b. No structures, trees or shrubs shall be placed on drainage easements.
  - c. Approval of landscaping on utility easements other than water and sewer shall be only with the approval of all utilities occupying same.
  - d. Where a drainage easement and any other type of easement cross, any and all uses for drainage purposes shall take precedence.
2. Bearings shown hereon are based on a bearing of S 88° 18' 42" E, for the south line of the southwest one-quarter of Section 17, Township 41 South, Range 43 East.
3. Where easements of different types cross, drainage easements shall have first priority, utility easements shall have second priority, access easements shall have third priority. All easements shall be subordinate to the rights of the public being determined by the laws of the State of Florida.

SOUTHEAST CORNER OF THE SOUTHWEST ONE-QUARTER OF SECTION 17, FOUND PALM BEACH COUNTY BRASS DISK IN CONCRETE.

T&Z = 46

PET. 89-73  
COLLECT  
RS/PRD

## COMMODORE'S POCKET

0604-001

69/73